

## Intelligent Design. Efficient Delivery.

We have undertaken extensive work in UK Law Enforcement to develop core Intelligence and Investigation capabilities. To support you in improving and streamlining your intelligence and investigation capability we will:

- Assess your current Intelligence and Investigation capability
- Support the development of your Intelligence and Investigation Operating Model
- Understand and enhance your team's ability to operate in the digital environment
- Guide and support your organisation through the transformation process

## Focused Thinking. Broad Capabilities.

Whether you need a gentle nudge in the right direction, or a full restructure, we can help. From initial analysis to equipping your team with the skills and knowledge required to meet your goals, we will be on hand to assist with services not limited to the following:

- **Design:** strategic planning through to business and technical design, cyber security and organisational change.
- **Applications:** tailored applications focused on securing & managing digital material.
- **Information Technology:** providing full end-to-end managed service of your IT estate, from transition to cloud through to day-to-day service management.
- **People, Skills and Knowledge:** upskilling your workforce, making your organisation a more accessible, inclusive place to work.

## Your Vision. Made Real.

We are an award-winning provider of transformation and cyber security solutions to organisations across the globe and we set out to be straightforward partners in a complex world. Issured helps clients transform their business vision into a reality, making them more efficient and effective, enabled by digital capabilities. We are comprised of experts from some of the most challenging and sensitive environments. Digital transformation is our working world and we're not afraid to get stuck in when it is time to deliver.

## Switched On. Sleeves Up.

Conventional technology and business consultancies can be rather "hands-off". To effect real change, it's our belief that it takes more than documentation.

We act with a hands-on ethos working collaboratively as part of your team, ensuring you are left with the knowledge and skills you need to continue on your digital transformation journey. It's digital transformation with a distinctly personal, practical approach.

# INTELLIGENCE & INVESTIGATION

To find out more, [see inside...](#)

The expertise, professionalism and willingness to support me as a client in delivering what is real complex digital transformation within UK policing is exceptional. The Issured team are dedicated to the shared vision we hold and have been able to understand and adapt to the needs of the portfolio with ease and agility. They are a critical contributing factor to our continued success"

*Director of UK Digital Policing Portfolio*



 **issured**®

TURNING VISION INTO REALITY

## CONNECT WITH US

[WWW.ISSURED.COM](http://WWW.ISSURED.COM)

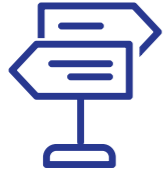
+44 1908 470 888  
[info@issured.com](mailto:info@issured.com)



@issuredlimited

Our team has supported Law Enforcement agencies across the world to embrace digital. Below is a summary of the work we have done.

# Intelligence and Investigation Cycle



## We have...

Designed and implemented Operating Models that provide a blueprint of how Law Enforcement agencies will operate in a digitally enabled environment to ensure efficiency, effectiveness and realisation of tangible benefit.

## We have...

- Developed digital upskilling training pathways to ensure Responders and Investigators identify and seize Digital Forensics opportunities.
- Designed frontline systems to allow Responders to access intelligence at the point of need.
- Developed a secure video platform to allow remote witness/victim interviews to be undertaken (**Mea: Connexus**)



Responders /  
Investigators

## We have...

Developed online services that allow members of the public to:

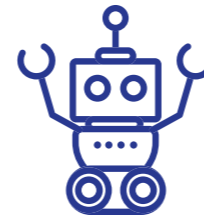
- Report crime
- Submit digital material
- Submit applications (firearms etc.)
- Track cases through their lifetime



Members of  
the Public

## We have...

- Designed processes and operating models that manage digital evidence from capture to disposal in a controlled, standardized way.
- Developed a Digital Evidence Management platform that ensures the authenticity of the digital material (**Mea: Fuse**)



Data Analytics &  
Automated  
Intelligence



System  
Integration



Cyber and  
Information Security



Information /  
Intelligence  
Capture



Digital Material  
Capture



Case and  
Intelligence  
Management



Digital Evidence



## We have...

## We have...

Developed Integration technologies which seamlessly move data between systems removing manual intervention, reducing data loss and increase data quality.

Designed processes and systems which manage intelligence and cases through their entire lifecycle in a coherent, standardised way.

Criminal Justice  
Integration

## We have...

- Designed processes that enable collaboration and data sharing between Law Enforcement and Criminal Justice partners.
- Designed systems to share case and digital evidence between Law Enforcement and Criminal Justice partners.

## We have...

- Conducted cyber threat assessments for core Law Enforcement systems and processes.
- Developed comprehensive cyber risk mitigation strategies.
- Security accredited key national Law Enforcement Systems